



Change your mind.
Disrupt the stigma.

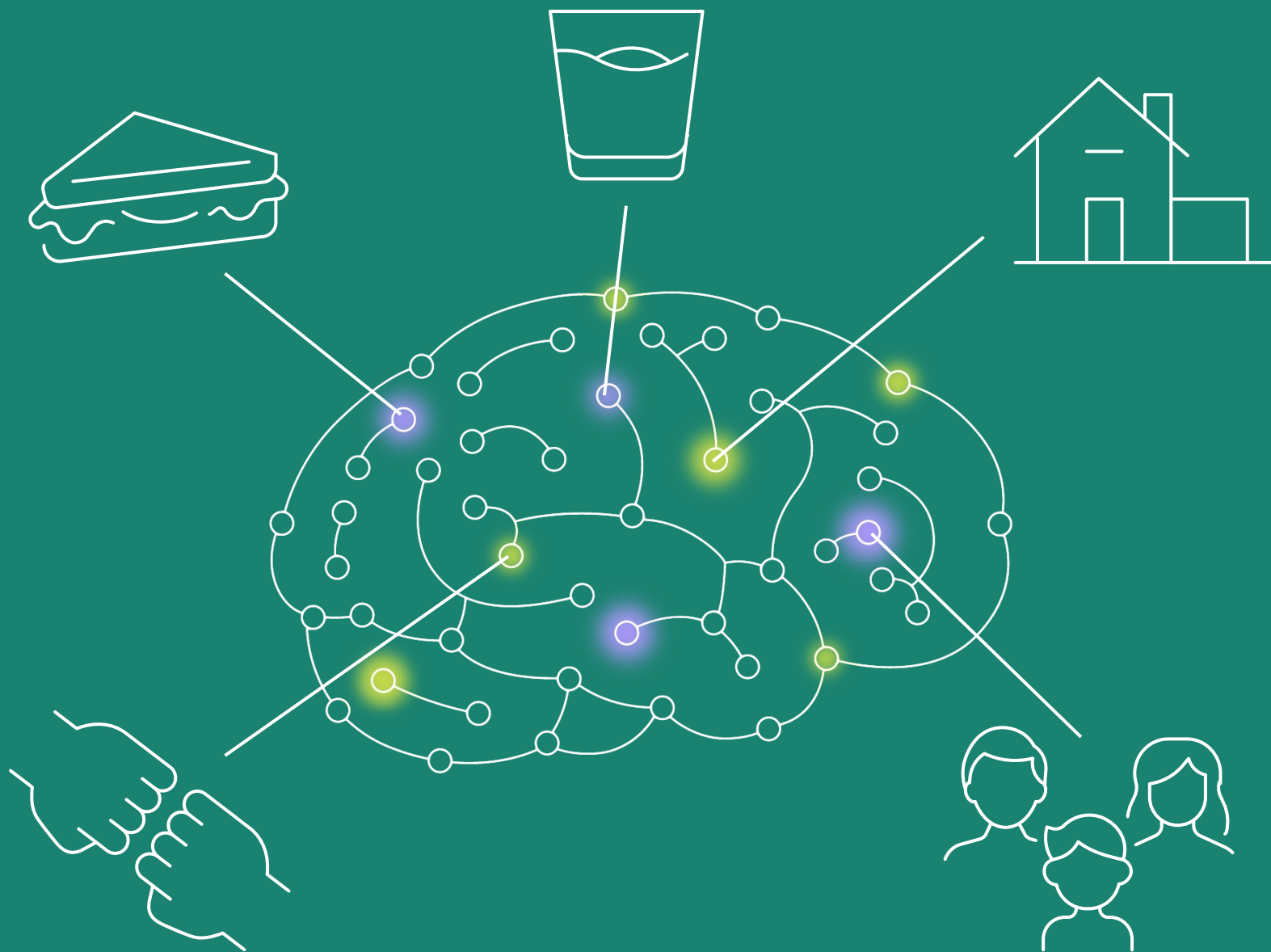


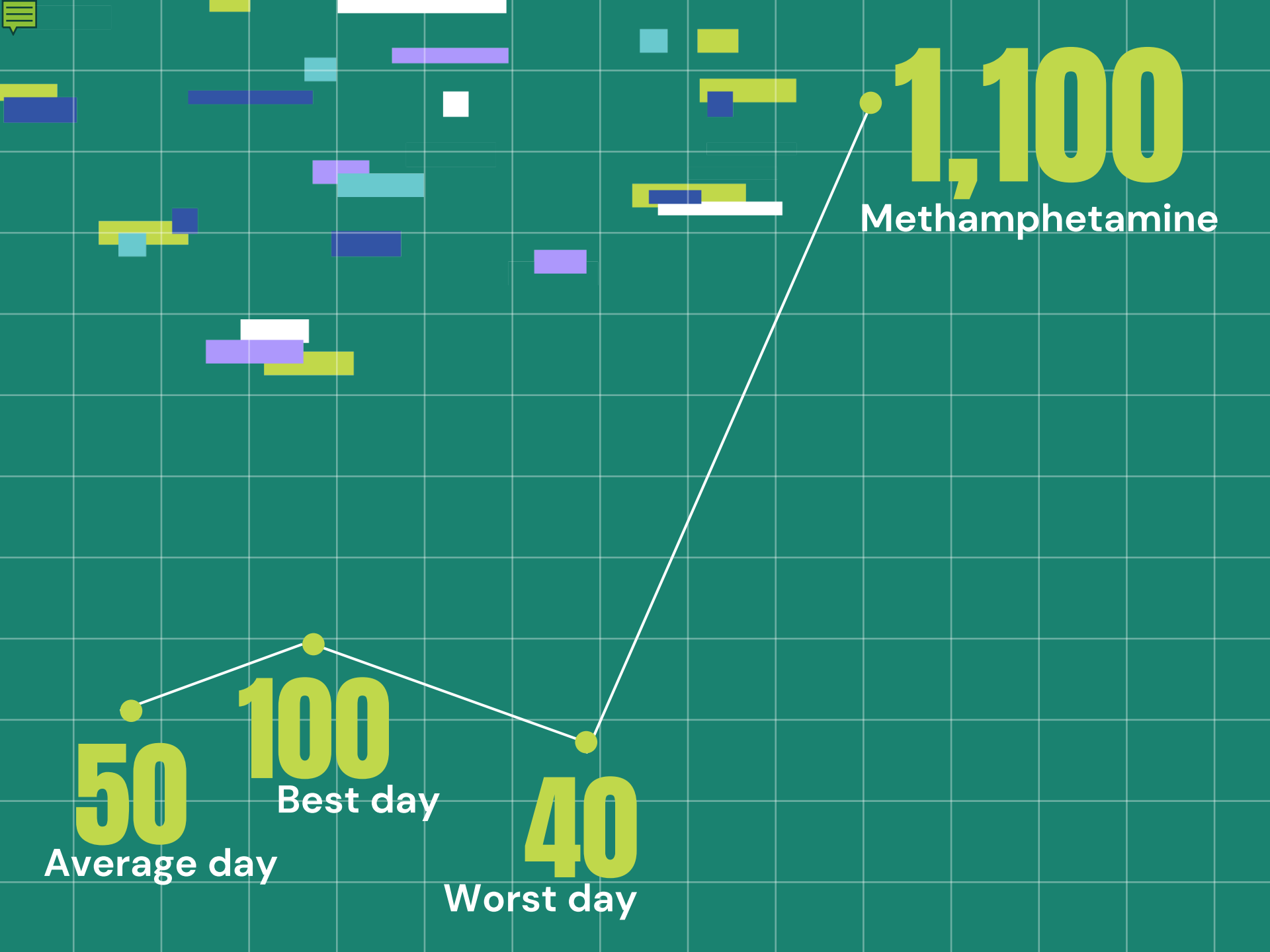


Substance use disorder
is a disease that
changes the brain.

Here's how:







50

Average day

100

Best day

40

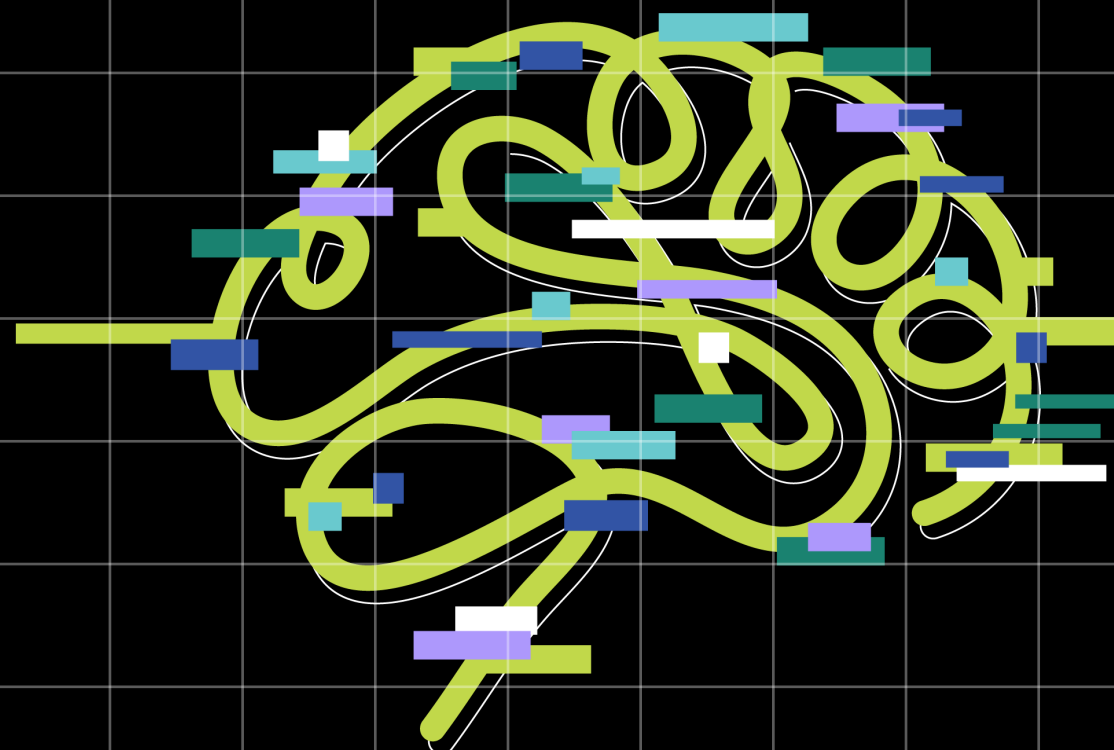
Worst day

1,100

Methamphetamine



1,100



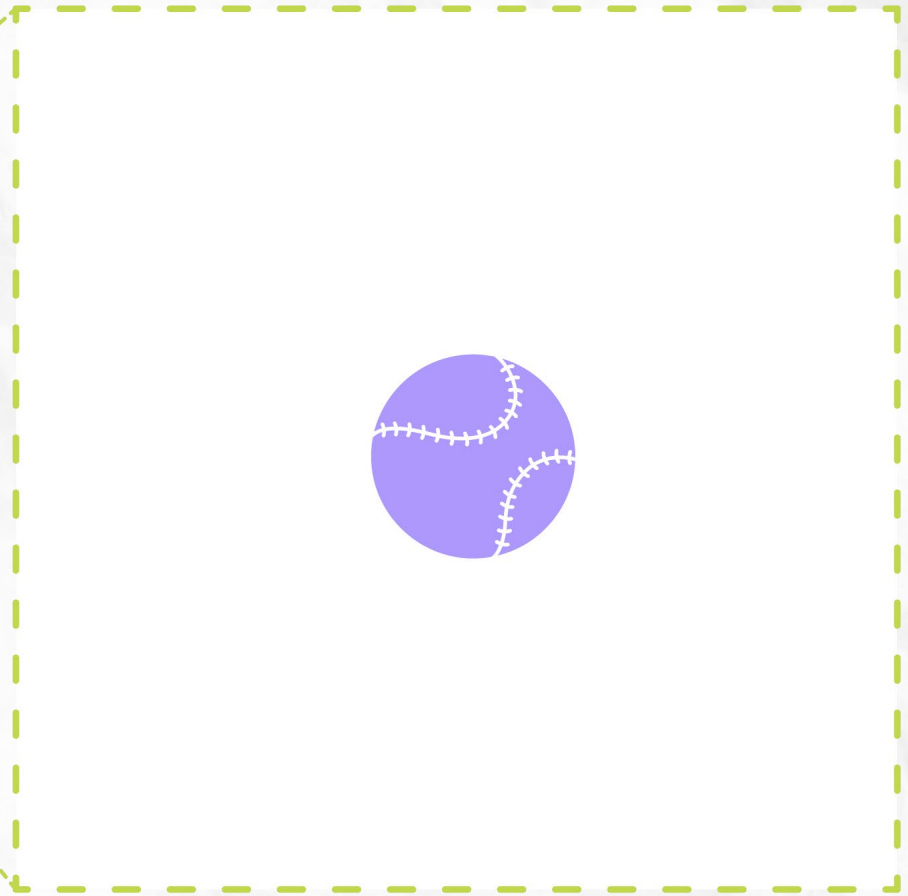
30





Measuring Craving

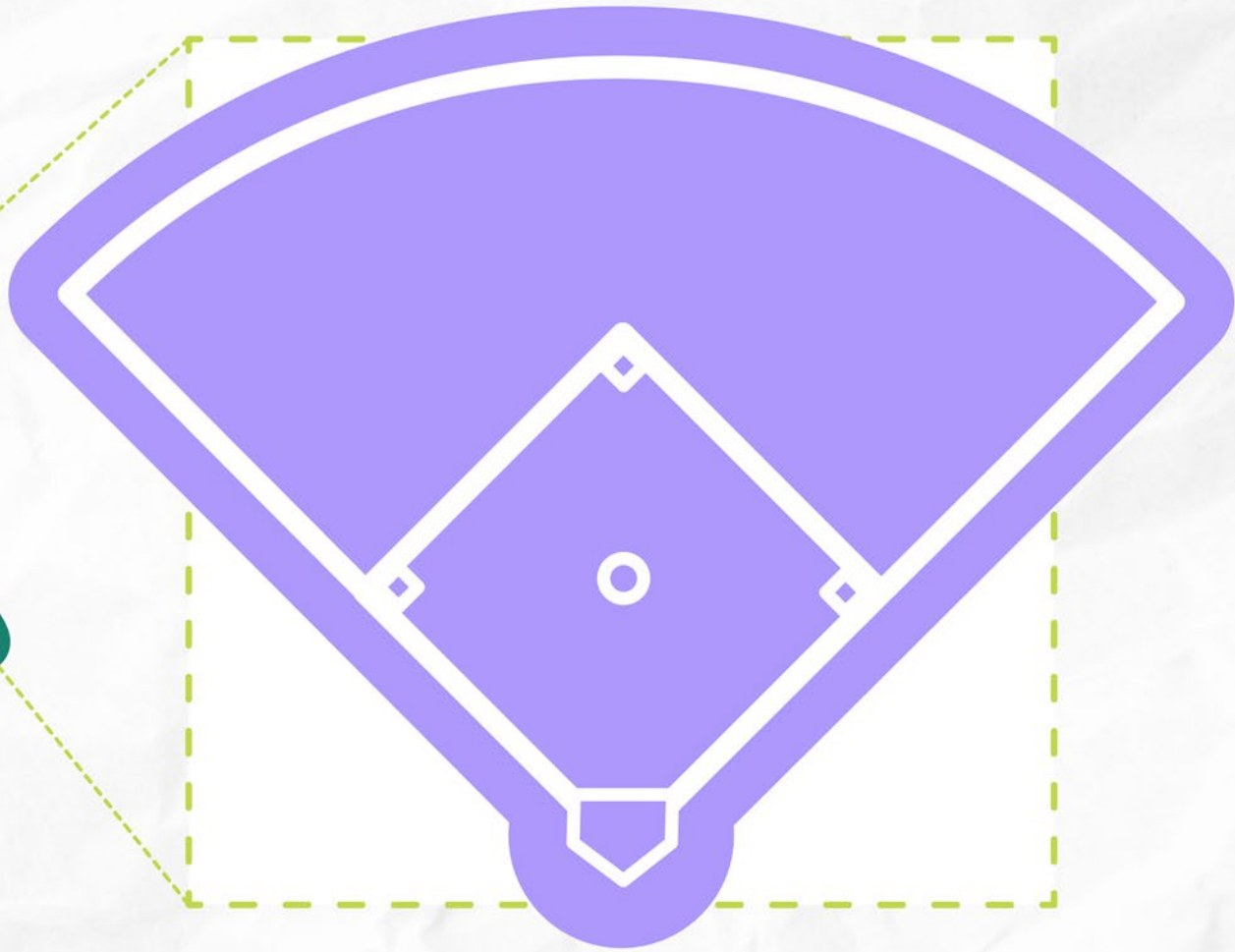




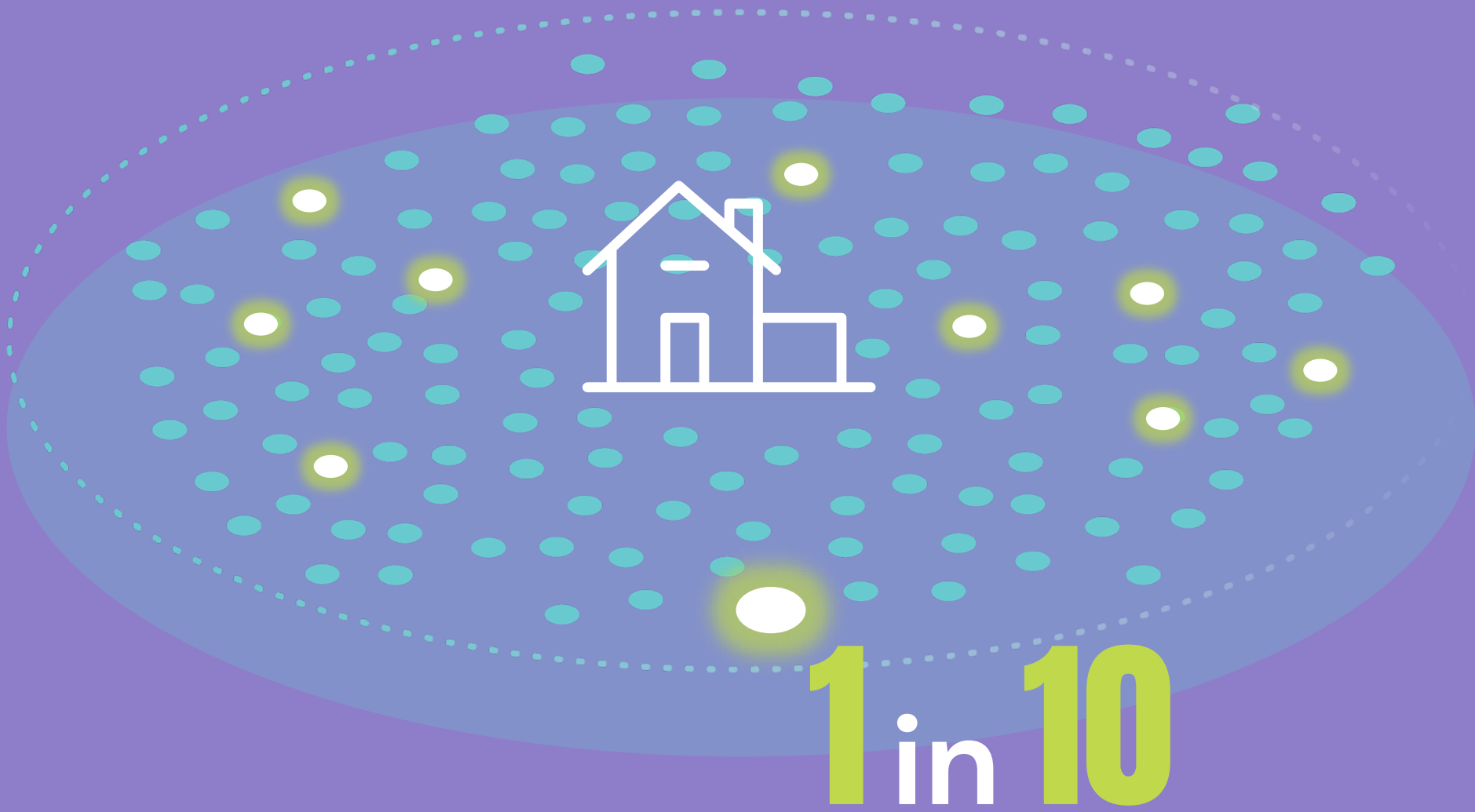
3 days
dehydration



5 days
without food



substance use





first responders



teachers



teenagers



everyone






35,900

affected



32,310

in need of care

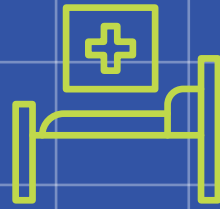
A yellow line graph is plotted against a blue background with a white grid. The line starts at the top left, descends to a local minimum, rises to a local maximum, descends to another local minimum, rises to a higher local maximum, descends to a third local minimum, rises to a fourth local maximum, and finally descends steeply towards the bottom right corner.

The Cost of Care



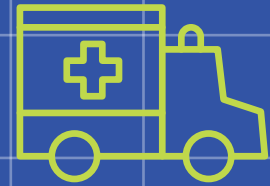
50

ER visits



10

hospital stays



8

ambulance rides

=

\$206,396



Treatment

=

\$21,980



The best medicine



=

the best investment.





**Treatment
works.**



There is hope.

Recovery is possible.

A man, a woman, and a young woman are walking along a brick-paved path. To their left is a large, vibrant mural featuring a man's face, a butterfly, and various abstract shapes. The background shows a building with windows and string lights. The image is decorated with purple and yellow wavy lines.

Start the conversation.

Disrupt the stigma.



changingmindslarimer.org